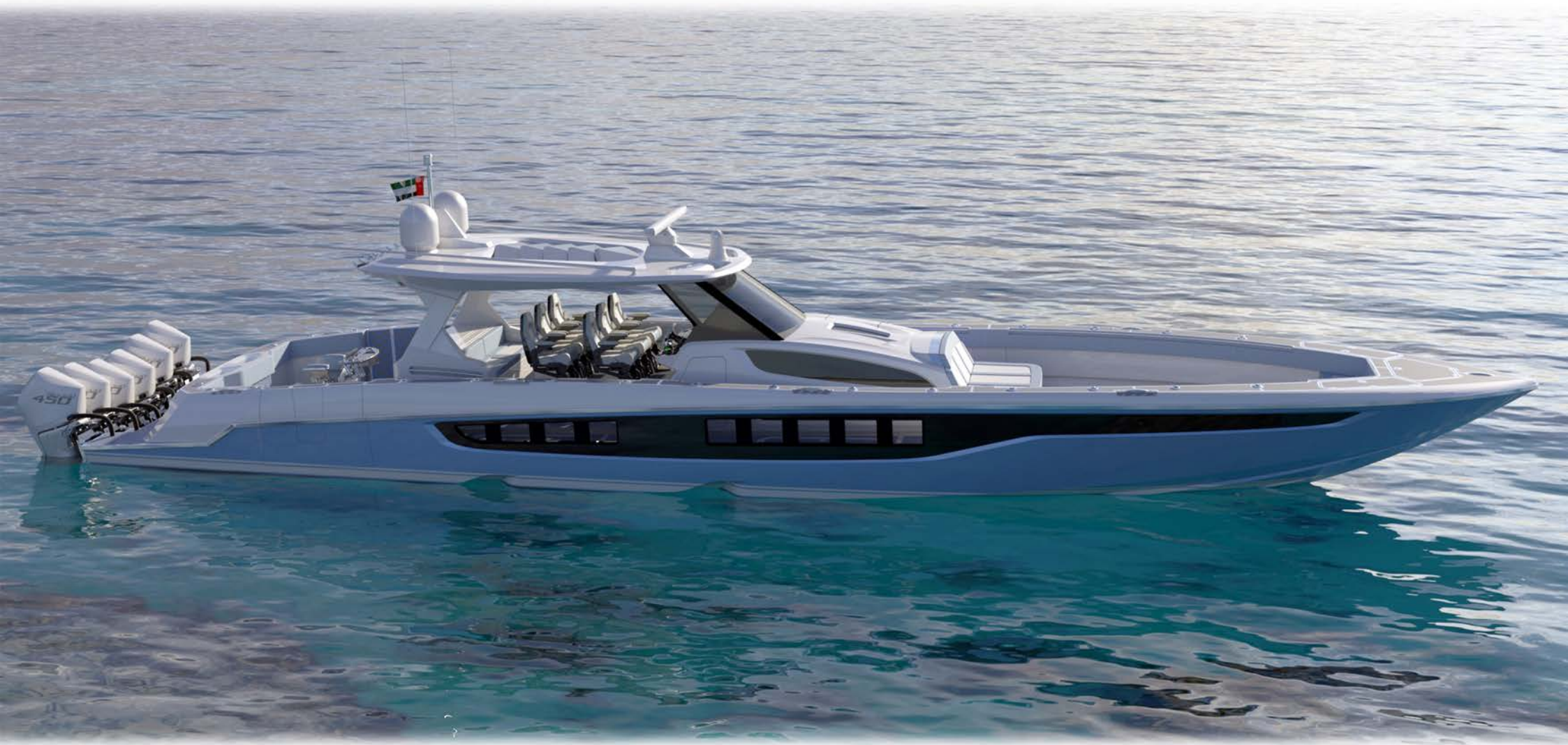


E B 6 3 0





E B 6 3 0





E B 6 3 0

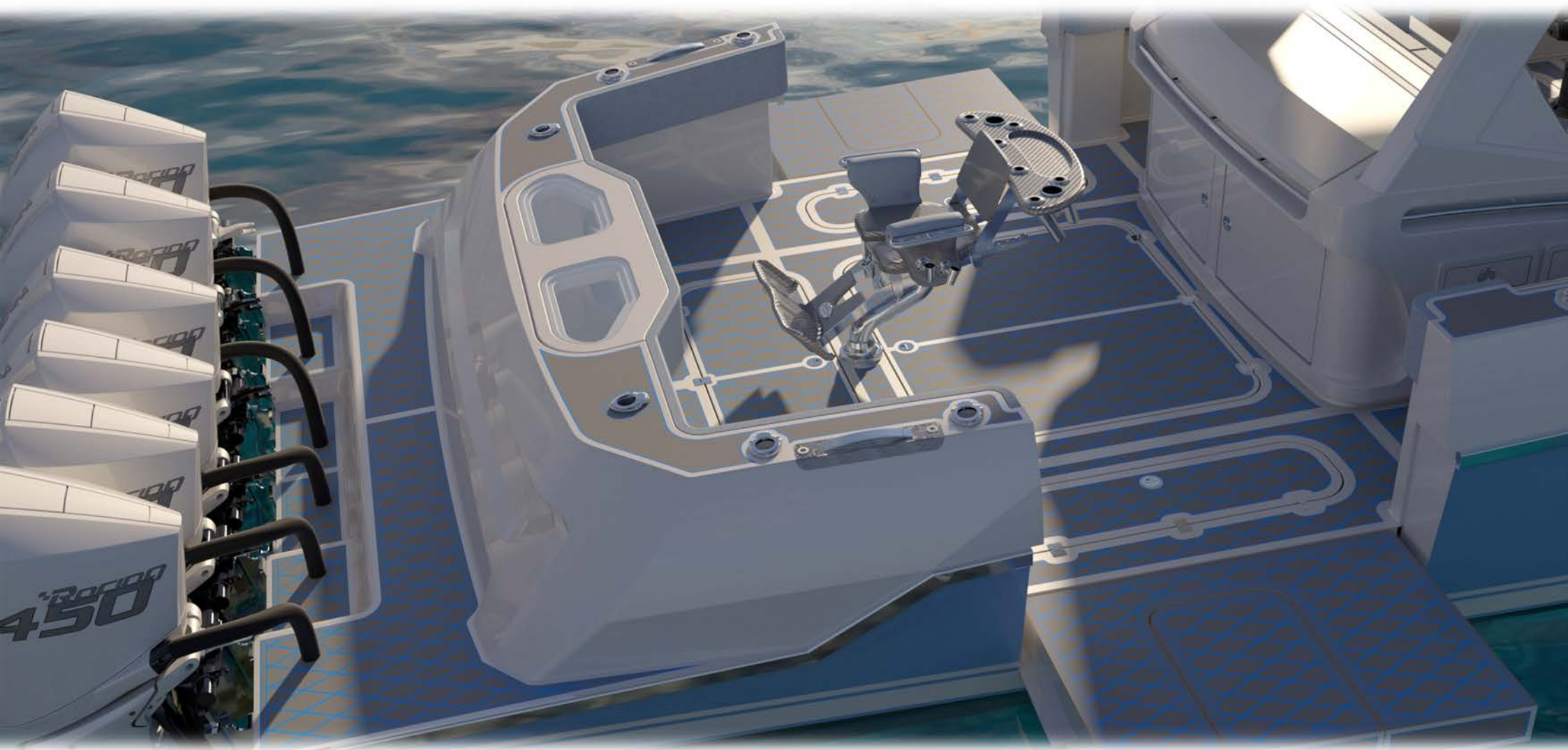




E B 6 3 0



E B 6 3 0





E B 6 3 0



E B 6 3 0

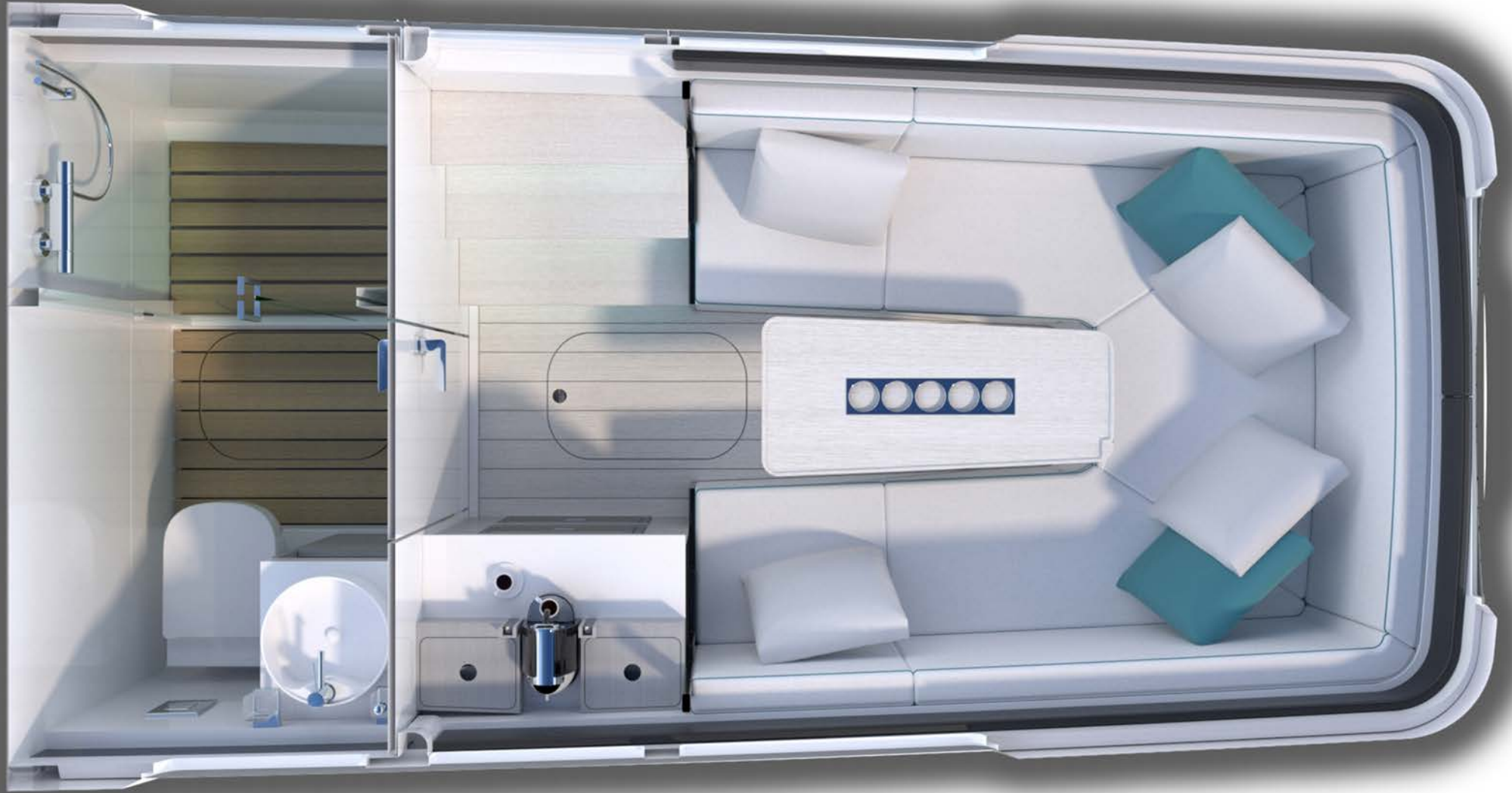


E B 6 3 0





E B 6 3 0



E B 6 3 0





E B 6 3 0



# E B 6 3 0



WHITE LACQUER & CARBON TRIM

GREY ASH & WHITE LARCH





# E B 6 3 0



WALNUT & ZEBRAND

FULL CARBON



# E B 6 3 0



WHITE LACQUER & CARBON TRIM

GREY ASH & WHITE LARCH





# E B 6 3 0



WALNUT & ZEBRANO

FULL CARBON



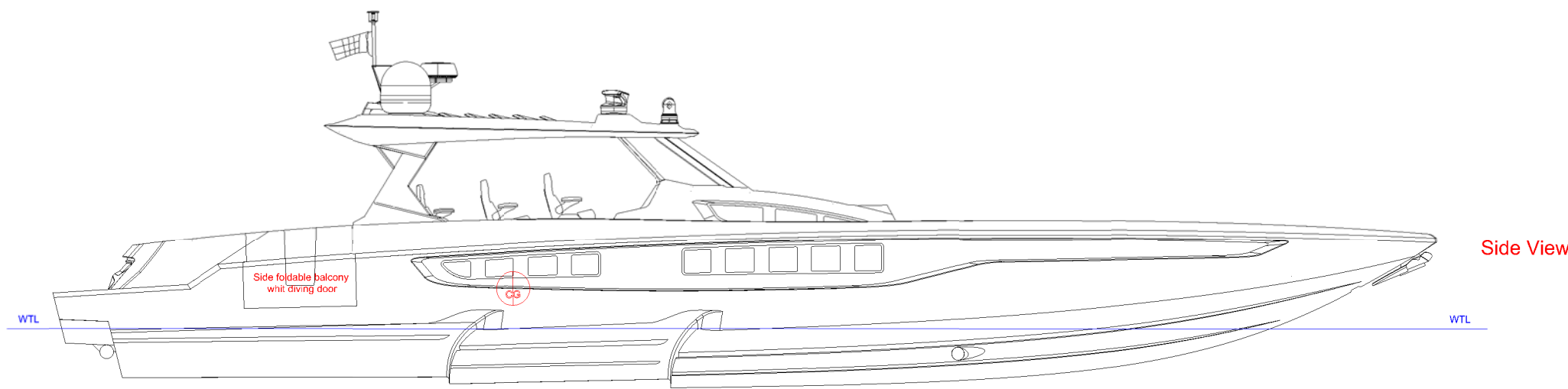
HULL TYPE	High performance ventilated step hull
CONSTRUCTION TYPE	Infused core reinforced multiaxial Carbone & glass fiber
PROPULSION SYSTEM	Outboard various configuration up to a max of 2700 HP
PASSENGER CAPACITY	Max 15 Passenger
CLASS	R.I.N.A CE certification

	Imperial	Metrics
Length overall	63 Ft	19.2 MT
Length @ water line	55 Ft	16.8 MT
Max Beam	13.5 Ft	4.2 MT
Max Draft	2.7 Ft	0.82 MT
Degree @ Transom	21.5 Degree	21.5 Degree
Max Hight water line/navigation light mast	12 Ft	3.65 MT
Max Hight keel/navigation light mast	14.7 Ft	4.48 MT
Dry weight without engines	19800 LBS	9000 KG
Fuel Tank capacity	2 x 500 USG / 1000 USG	3785 LIT
Diesel Tank capacity	90 USG	340 LIT
Fresh Water Tank capacity	120 USG	454 LIT
Waste Holding tank capacity	40 USG	150 LIT
Grey Water tank capacity	40 USG	150 LIT
Live Bait tank capacity	120 USG	454 LIT
Insulated Bilge Storage capacity	2000 USG	7570 LIT
Dry storage capacity	120 USG	454 LIT

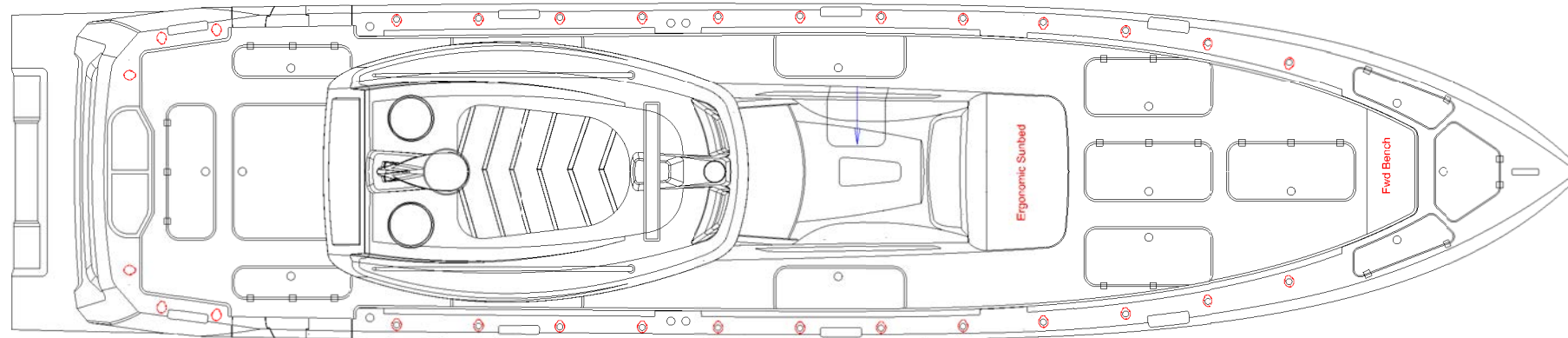
## Propulsion system options selection

Brand	Model	Configuration	Predicted top speed @ half load in Mph
Mercury	400 R 2.6 Liters V6	5 engines setups	68 Mph
Mercury	400 R 2.6 Liters V6	6 engines setups	75 Mph
Mercury	450 R 4.6 Liters V8	4 engines setups	67 Mph
Mercury	450 R 4.6 Liters V8	5 engines setups	74 Mph
Mercury	450 R 4.6 Liters V8	6 engines setups	80 Mph
Mercury	600 7.6 Liters V12	4 engines setups	68 Mph
Yamaha	XTO 425 HP	4 engines setups	58 Mph
Yamaha	XTO 425 HP	5 engines setups	63 Mph

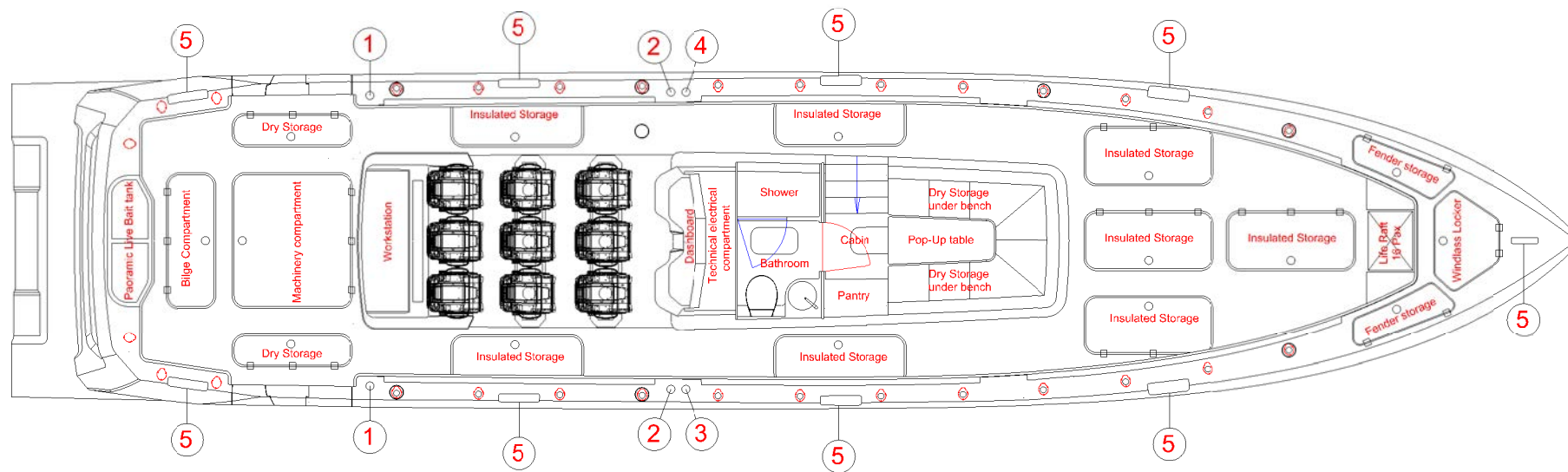




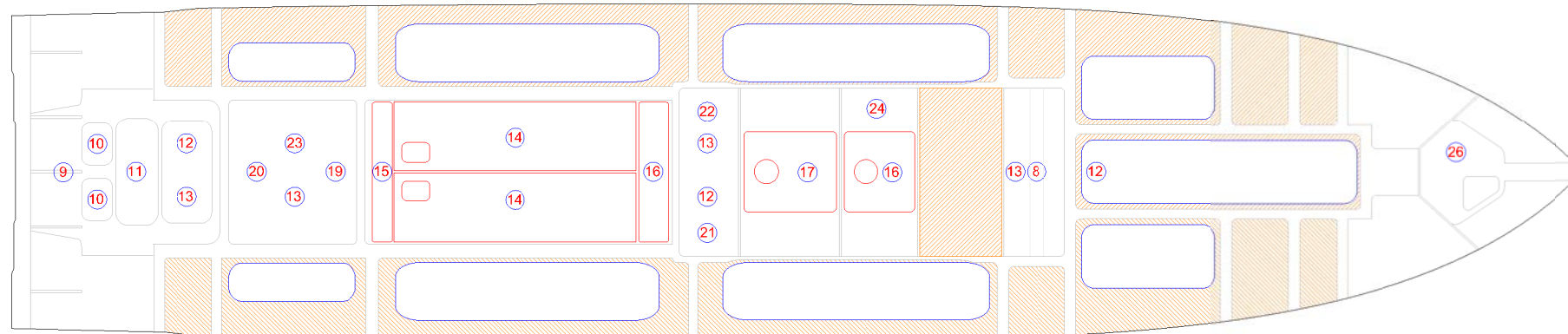
Side View



Top View



Cockpit Layout



Bilge compartments

MAIN SPECIFICATIONS	
Manufacturing	Emirates Boats LLC - Dubai
Model	EB 63 CC sport fishing
Category	Pleasure craft
Passengers	MAX 15
Class	RINA CE Certification
Hull Type	High performance ventilated step hull
Propulsion System	Outboard Engine x MAX 3000 HP
LOA	63 FT 19.2 MTR
LWL	55 FT 16.8 MTR
Max Beam	13.5 FT 4.2 MTR
Max Draft	2.7 FT 0.82 MTR
Max Hight from WTL	12 FT TOP MAST 3.65 MTR TOP MAST
Dry Weight without engines	19800 LBS 9000 KG
Fuel tank capacity	2 X 500 USG 2 X 1892 LITRES
Diesel tank capacity	90 USG 340 LITERS
Fresh water tank capacity	120 USG 454 LITERS
Waste tank capacity	40 USG 150 LITERS
Grey water tank capacity	40 USG 150 LITERS
Live Bait tank capacity	120 USG 454 LITERS
Insulated storage capacity	2000 USG 7570 LITERS
Dry storage capacity	120 USG 454 LITERS

**10 EQUIPMENT DESCRIPTION**

- 1 Diesel filling taps
- 2 Petrol filling taps
- 3 Fresh Water filling taps
- 4 Waste water shore connection
- 5 Retractable heavy duty deck cleats & Fender holders
- 6 Rod Holders
- 7 Cup Holders
- 8 Bow thruster
- 9 Stern Thruster
- 10 Sea chest gate valves
- 11 Main strainer
- 12 Storage collection tank
- 13 Bilge pumps
- 14 Fuel tanks
- 15 Diesel tank
- 16 Fresh water tank
- 17 Waste holding tank
- 18 Grey water tank
- 19 Gyro Stabilizer
- 20 Generator
- 21 Air Conditioning
- 22 Fresh water pump
- 23 Salt water pump
- 24 Water Heater
- 25 Fresh water pump
- 26 Anchor windlass
- Buoyancy compartment

**EB Yachts Americas LLC**  
 6330 N Andrews Ave  
 Suite 1001  
 Fort Lauderdale, FL 33334  
 USA  
 info@ebyachts.com